

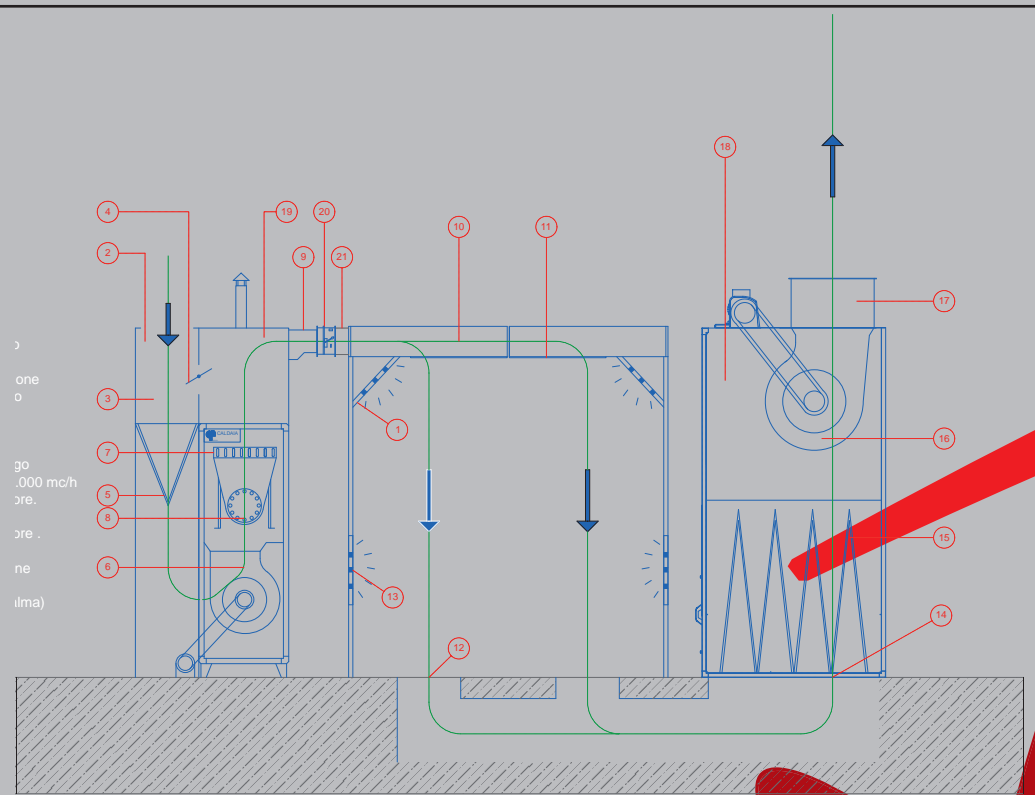


conditioning
 aspiration
 dust collection
 soundproofing
 environmental solutions



TECHNICAL DESCRIPTION

1. Ceiling fixtures with 30W neon tubes
2. Hot group air intake
3. Intake curve
4. Automatic recirculation heater
5. Hot group pre-filters
6. 16.000-41.000 c.m./h centrifugal fan
7. Heat exchanger. Pipes.
8. Heat exchanger. Boiler.
9. Hot air intake pipe.
10. Plenum
11. Sky filters
12. Exhaust air outtake pits
13. Lateral ceiling fixtures with 30W neon tubes
14. Purifier. Keystone connection
15. Purifier. Aspiration centrifugal fan
16. Purifier. Calibration shutter
17. Purifier. Calibration shutter
18. Purifier. Extractor
19. Hot air group
20. Coupling vibration



AUTOMOTIVE SPRAY BOOTHS

*Designed to meet the needs
 of body repairmen*

MODEL	DIMENSIONS (mm)			FEATURES	
	A	B	H		
				POWER CAPACITY (Kw)	7,5
C.V. 6 x 4	6000	4000	2500/2800	EXCHANGER (kCal)	150
				AIR CAPACITY (Mc/h)	18000/20000
				POWER CAPACITY (Kw)	9,2
C.V. 6,6 x 4	6600	4000	2500/2800	EXCHANGER (kCal)	180
				AIR CAPACITY (Mc/h)	20000/24000
				POWER CAPACITY (Kw)	9,2
C.V. 7,2 x 4	7200	4000	2500/2800	EXCHANGER (kCal)	180
				AIR CAPACITY (Mc/h)	20000/24000
				POWER CAPACITY (Kw)	2 x 5,5
C.V. 7,2 x 4,35	7200	4350/4550	2890	EXCHANGER (kCal)	180
				AIR CAPACITY (Mc/h)	28000
				POWER CAPACITY (Kw)	2 x 5,5
C.V. 7,8 x 4,35	7800	4350/4550	2890	EXCHANGER (kCal)	180
				AIR CAPACITY (Mc/h)	28000
				POWER CAPACITY (Kw)	2 x 7,5
C.V. 8,4 x 4,35	8400	4350/4550	2890	EXCHANGER (kCal)	240
				AIR CAPACITY (Mc/h)	28000

G.F. s.a.s. - Strada Sommariva, 2/4
 12030 Caramagna Piemonte (CN)
 Tel. +39 0172 89597 - Fax +390172 89030
 e-mail: info@gfspirazioni.it

ED. 03-2011

NOTE: SYSTEM REQUIREMENTS
 UNI EN 13355

FRONTAL TRIFOLD WITH FULL APERTURE SIDE AND BACK DOOR



COMPONENTS

The paint booth for motor vehicles is primarily made up of:

SIDE WALLS made of laminated steel, double sheet thickness 10/10, with interposition of fiberglass soundproofing material, reinforced internally. The thickness of the Panel is 60 mm. Inner side coated white sheet.

PLENUM FILTER, with practical hooks that allow a fast and easy replacement of sky filters, with a high filtration capacity..

FRONT, with three full open doors, door side, with by proof portholes for internal inspection.

LIGHTING, with neon lights of large surface that eliminate glares and shadows.

Inside the cabin, polluted air outflow may be made as follows:

- METAL BASEMENT with perimeter size equal to that of the cabin.
- BRICK BASEMENT consisting of a floor brick of adequate capacity
- LATERAL AIR OUTFLOW

Filtration can be done with bag filters or (preferably) with cartridges containing activated carbon.



FAN GROUP

Essential Accessory for the functioning of the booth, is formed by a supporting structure in steel, properly treated, and by external panels made of galvanized sheet steel sandwich, pre-painted or plastic according to customer needs. Within the fan group are placed the centrifugal fan, which pushes the air inside the cabin, and its electric motor, and the combustion chamber with heat transfer pipelines, which serve to heat the air before its entry into the booth. Recycling Damper has the function of increasing output temperature of the air in drying phase.

DRY PURIFIER GROUP

Composed of:

SUPPORTING METAL STRUCTURE with steel plates formed risers and galvanized sp. 15/10. The paneling consists of thermal and acoustic insulating coated galvanized steel with a thickness of 10/10. Rapid opening system to replace filter groups.

FILTRATING SECTION, with cells with frame in pre-cut cardboard and filtrating media in fiberglass.

FAN SECTION, composed of two centrifugal fans connected to engines through belts and pulleys. The Group also has a manual calibration damper for the compensation of saturation filters.



STANDARD SUPPLY with a REI120 damper